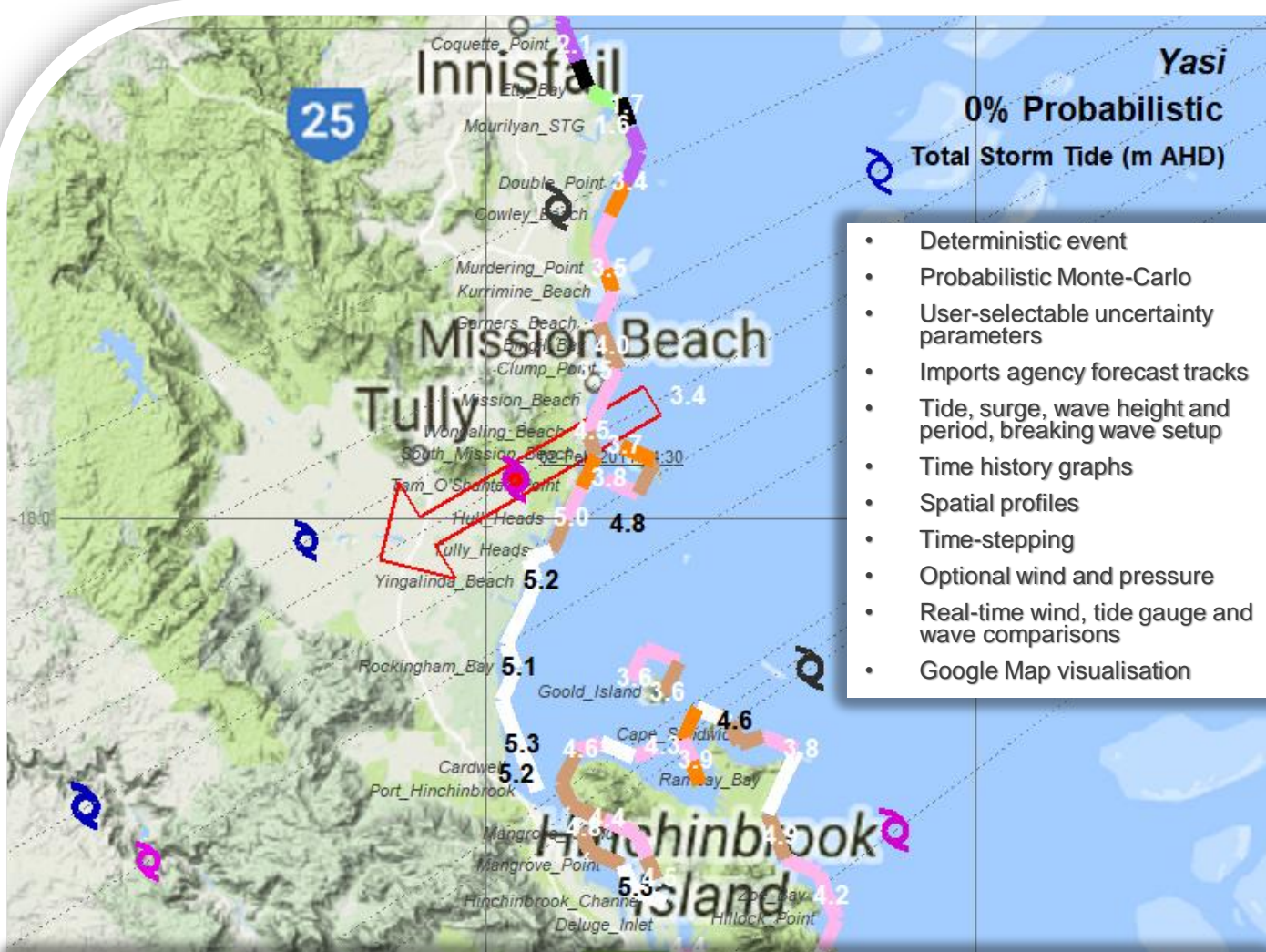


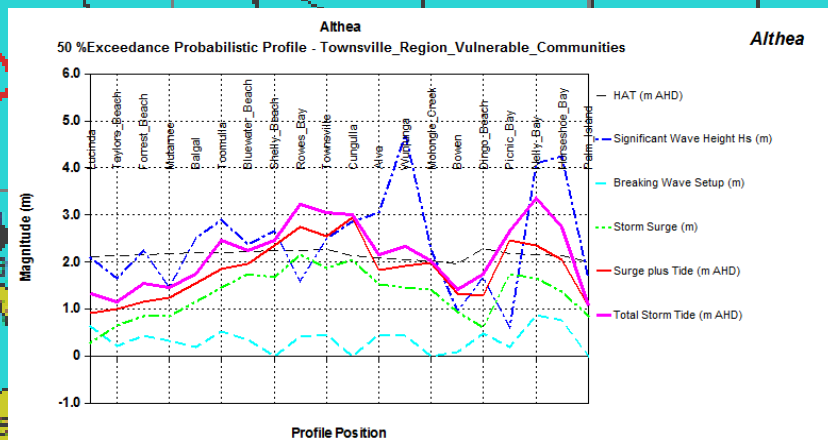
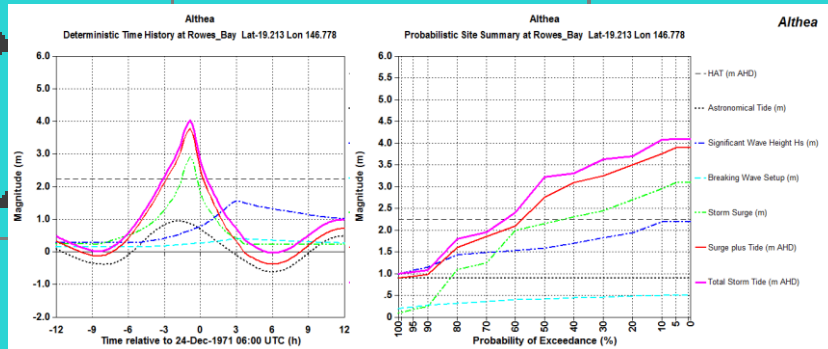
SEAtide Probabilistic Storm Tide Prediction System

SEAtide provides a prediction and analysis system to enable tropical cyclone forecasters and emergency managers to rapidly evaluate the possible impact of *storm tide* threats to coastal communities.

It provides an intuitive operating interface that is easy to learn and operationally efficient.

A central map display is supported by a data browser and a wide variety of space and time graphical output.

SEAtide V3.3 Queensland-Gulf Model



SEAtide Storm Tide Browser

50.0 %

Exceedance Probability Level (50% is expected, 0% is max envelope)

Close

Mode Selection

Site Selection

Sort By

Time Zone

Graph

Print

Totem

☐ Deterministic

☐ Dependent

☒ Probabilistic

☐ Peak Prob

☒ Named Only

☐ All

☒ Magnitude

☐ Site Name

☐ Zone

☒ UTC

☐ Local

Site

Space

View

Report

View

Townsville_Region_Vulnerable_Communit

Total Storm Tide (m AHD) | Surge plus Tide only (m AHD) | Surge magnitude (m) | Wave setup magnitude (m) | Significant Wave Height (m) | Astronomical Tide (m AHD)

	50.0% Exceedance	m AHD	>HAT (m)	Earliest UTC	Latest UTC	Dur. (h)	>HAT (%)	Earliest UTC	Latest UTC
1	Nelly_Bay	3.3	1.2	24-Dec-1971 03:39	24-Dec-1971 05:02	1.4	86.7	24-Dec-1971 02:58	24-Dec-1971 08:43
2	Kissing_Point	3.3	1.1	24-Dec-1971 04:41	24-Dec-1971 05:25	0.7	66.7	24-Dec-1971 04:15	24-Dec-1971 09:13
3	Arcadia	3.2	1.0	24-Dec-1971 03:01	24-Dec-1971 05:23	2.4	77.5	24-Dec-1971 02:50	24-Dec-1971 08:39
4	Rowes_Bay	3.2	1.0	24-Dec-1971 03:24	24-Dec-1971 05:22	2.0	66.7	24-Dec-1971 05:26	24-Dec-1971 09:07
5	Cape_Ferguson	3.1	0.9	24-Dec-1971 02:49	24-Dec-1971 03:48	1.0	83.0	24-Dec-1971 02:37	24-Dec-1971 05:04
6	Cungulla	3.0	0.9	24-Dec-1971 02:39	24-Dec-1971 03:40	1.0	73.3	24-Dec-1971 03:08	24-Dec-1971 05:32
7	Chunda_Bay	3.0	0.8	24-Dec-1971 03:01	24-Dec-1971 03:44	0.7	73.3	24-Dec-1971 02:56	24-Dec-1971 04:49
8	Townsville	3.1	0.8	24-Dec-1971 04:46	24-Dec-1971 05:20	0.6	69.7	24-Dec-1971 04:09	24-Dec-1971 08:49
9	Jerona	2.8	0.6	24-Dec-1971 03:54	24-Dec-1971 04:25	0.5	86.7	24-Dec-1971 03:35	24-Dec-1971 05:25
10	Horseshoe_Bay	2.8	0.6	24-Dec-1971 02:49	24-Dec-1971 06:06	3.3	66.7	24-Dec-1971 03:52	24-Dec-1971 08:45
11	Bowling_Green_Bay	2.7	0.6	24-Dec-1971 02:23	24-Dec-1971 03:49	1.4	86.7	24-Dec-1971 03:37	24-Dec-1971 04:57
12	Cape_Pallarenda	2.8	0.6	24-Dec-1971 05:19	24-Dec-1971 05:57	0.6	53.3	24-Dec-1971 03:27	24-Dec-1971 06:54
13	Ross_River	2.8	0.5	24-Dec-1971 03:14	24-Dec-1971 05:35	2.3	60.0	24-Dec-1971 03:30	24-Dec-1971 06:12
14	Cape_Ferguson_STG	2.7	0.5	24-Dec-1971 02:50	24-Dec-1971 03:49	1.0	73.3	24-Dec-1971 03:28	24-Dec-1971 04:23
15	Picnic_Bay	2.7	0.5	24-Dec-1971 03:12	24-Dec-1971 05:11	2.0	53.3	24-Dec-1971 03:16	24-Dec-1971 05:54

Peak 4.02m AHD
3:10pm EST Friday

